

**How to manage
your emissions:**

***Why, What & How
to measure***




Pavlo Smoliy
CEO, *Trellis Technologies*

WHY measure? Dream Job!

ESG Manager Job Description	The Job!!!
      	 

WHERE is my data??? It's a little bit complicated...

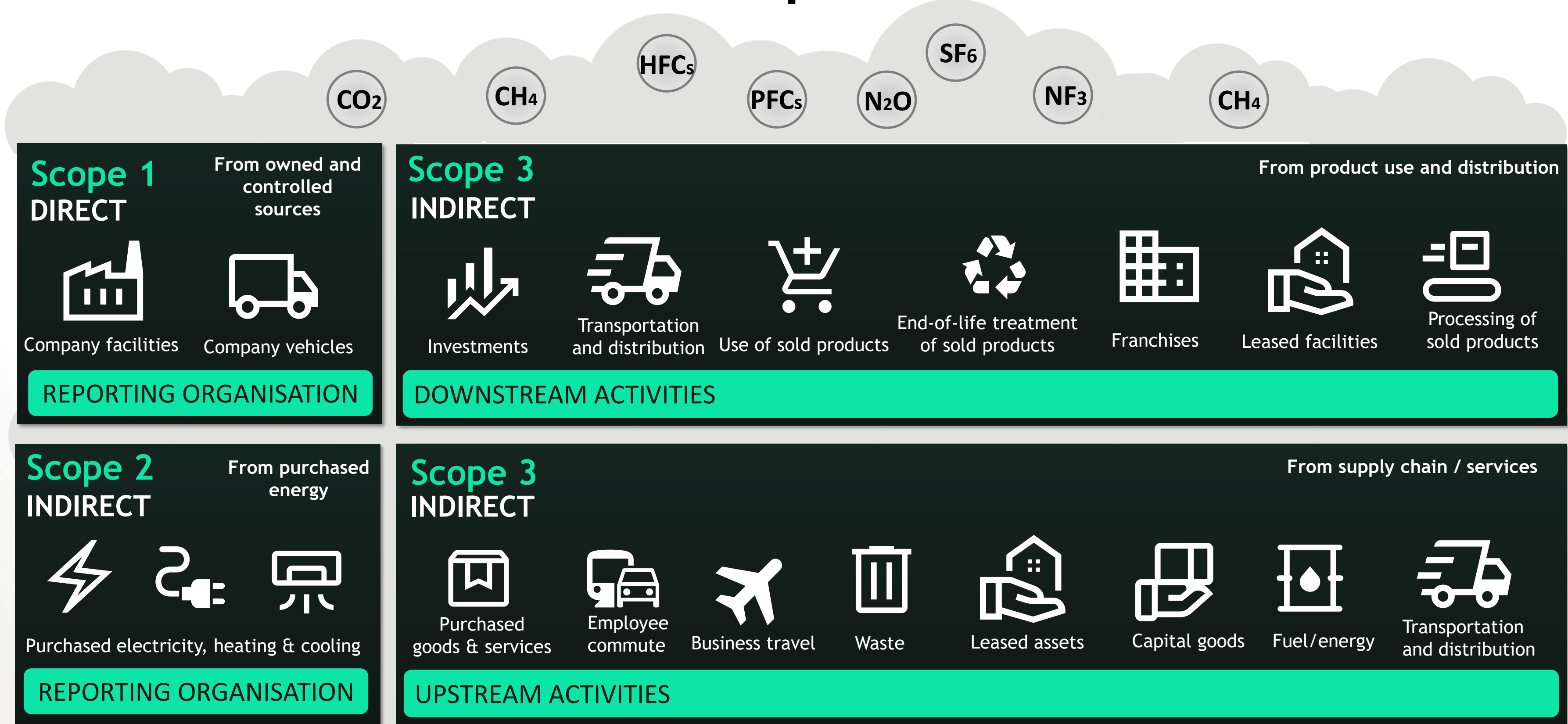


This image shows a complex spreadsheet interface with multiple overlapping windows. The main window displays a large table with columns for dates, descriptions, and numerical values. A smaller window is overlaid on the left, showing a list of items with checkboxes. The spreadsheet appears to be a detailed financial or operational record, with data organized in a structured, tabular format.

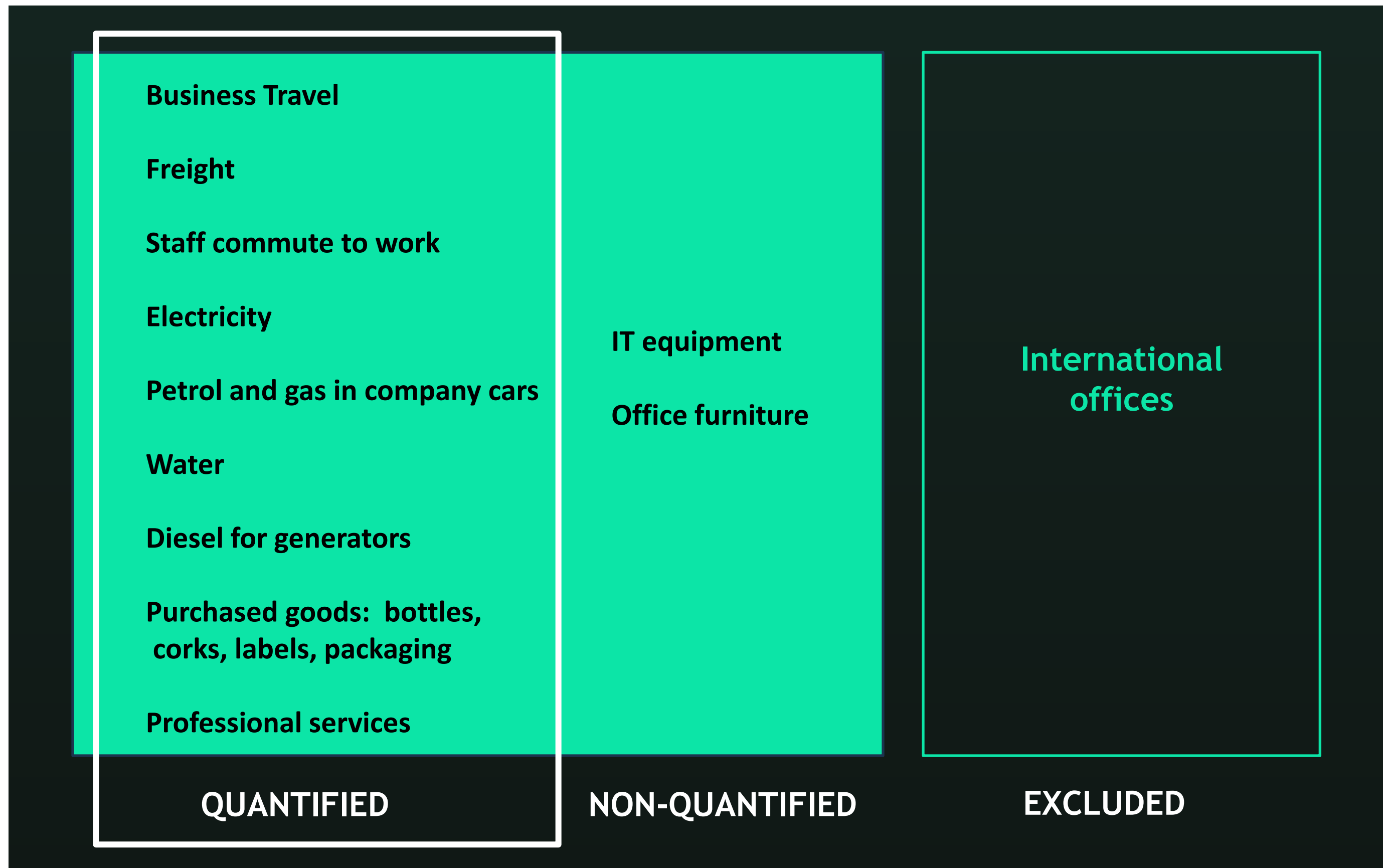


This image shows a web portal interface for 'ieenergy'. The page displays account information, including a 'Your Account' section with a balance of \$200.00. Below this, there is a 'Energy Charges' section showing a total charge of \$200.00. The interface includes various navigation links and a sidebar with additional options. The overall design is clean and professional, typical of a utility company's online portal.

A little reminder on Emission Scopes...

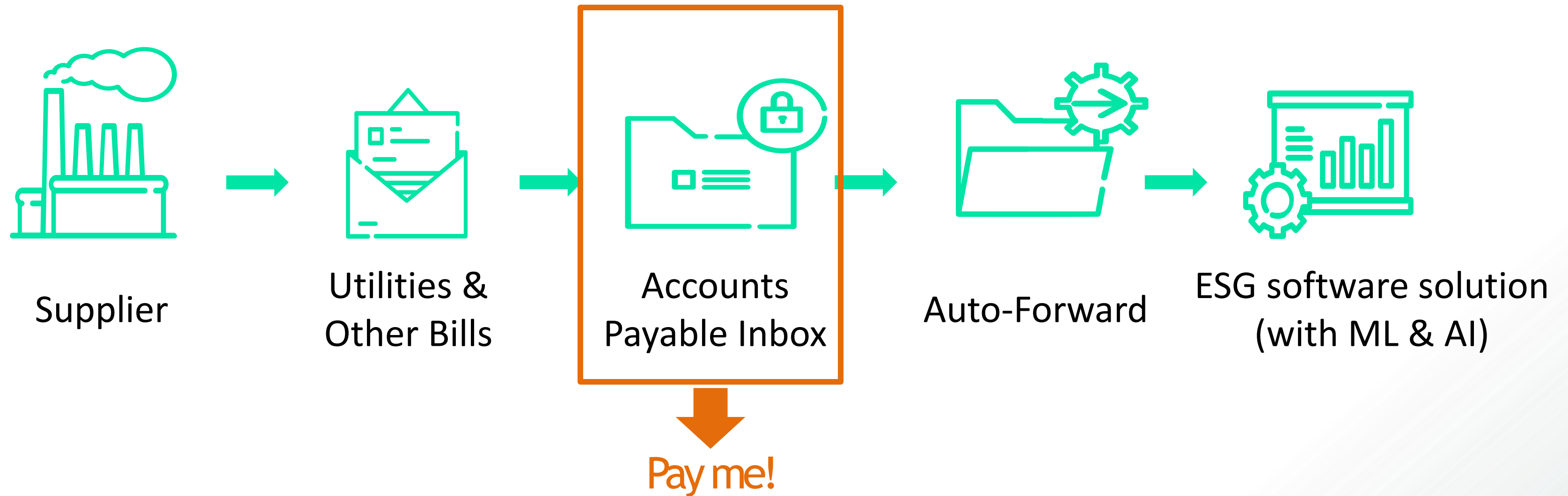


WHAT do I control (in the 'E' of ESG)? Set Boundaries!

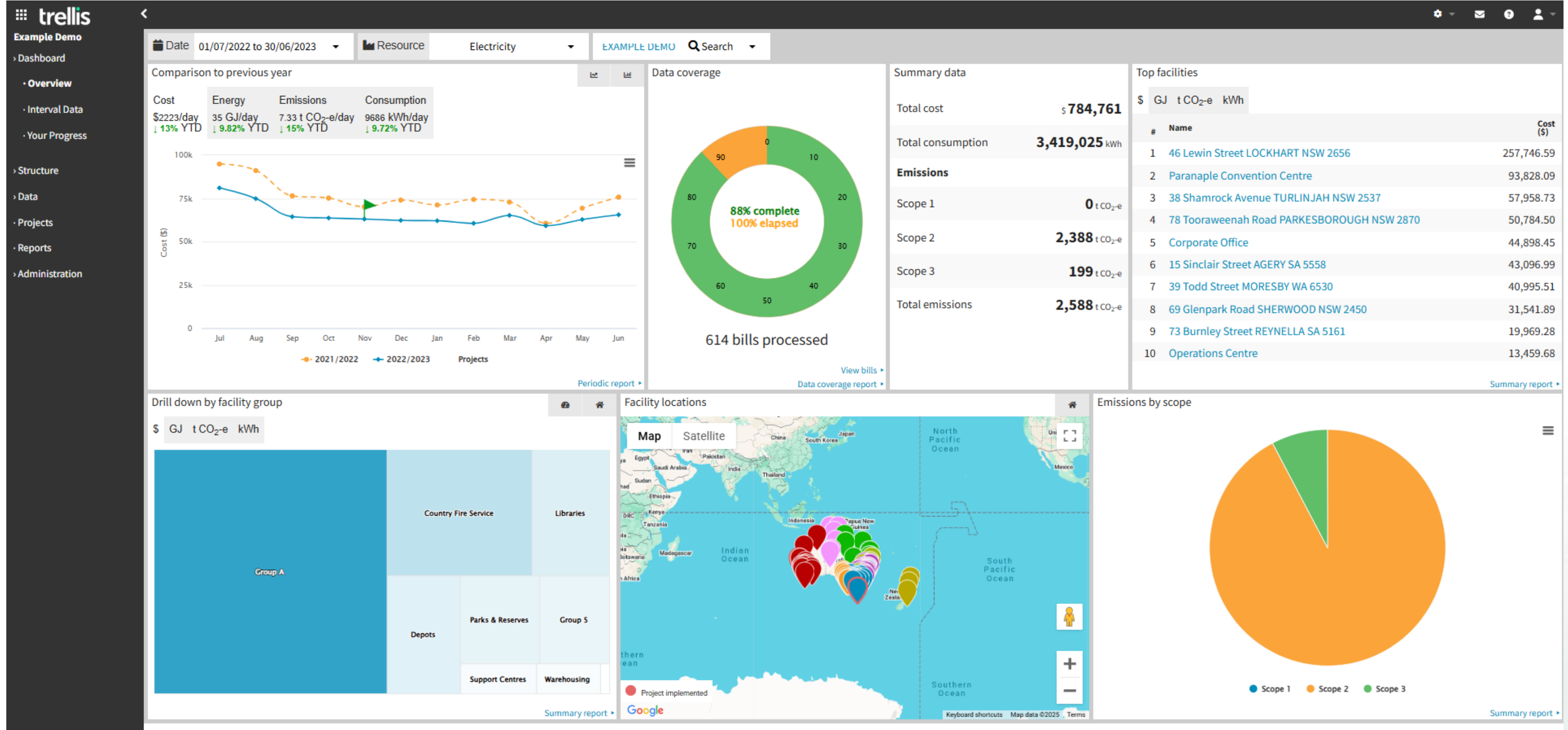


WHO is the ultimate data custodian?

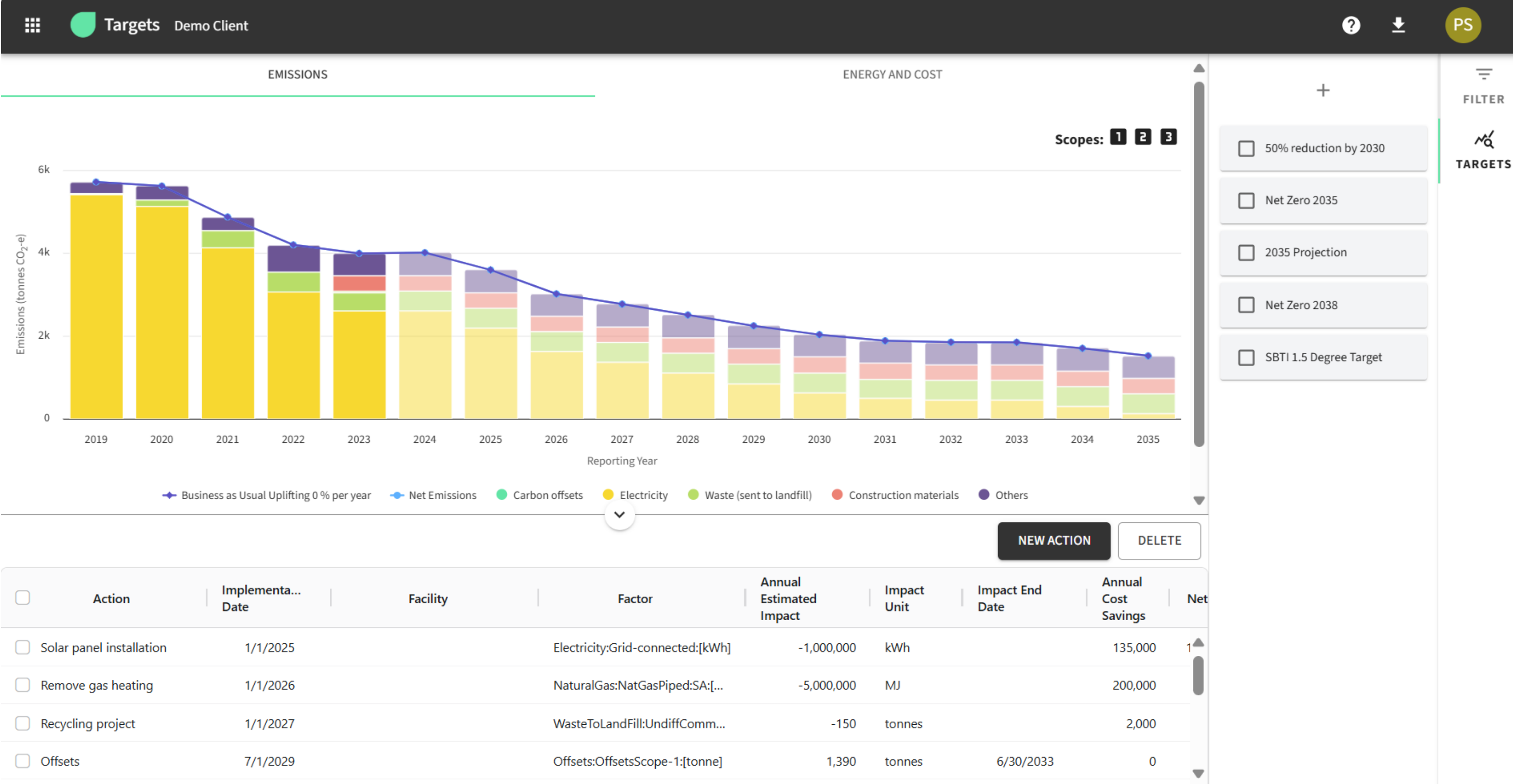
Most likely Accounts Payable!



HOW to solve the data challenge? Live feed from AP (with AI & ML)



Then set and track your targets (Net Zero, SBTi etc.)



Q & A

